



## **Nurturing Student Success at DUT through ENVISION2030**

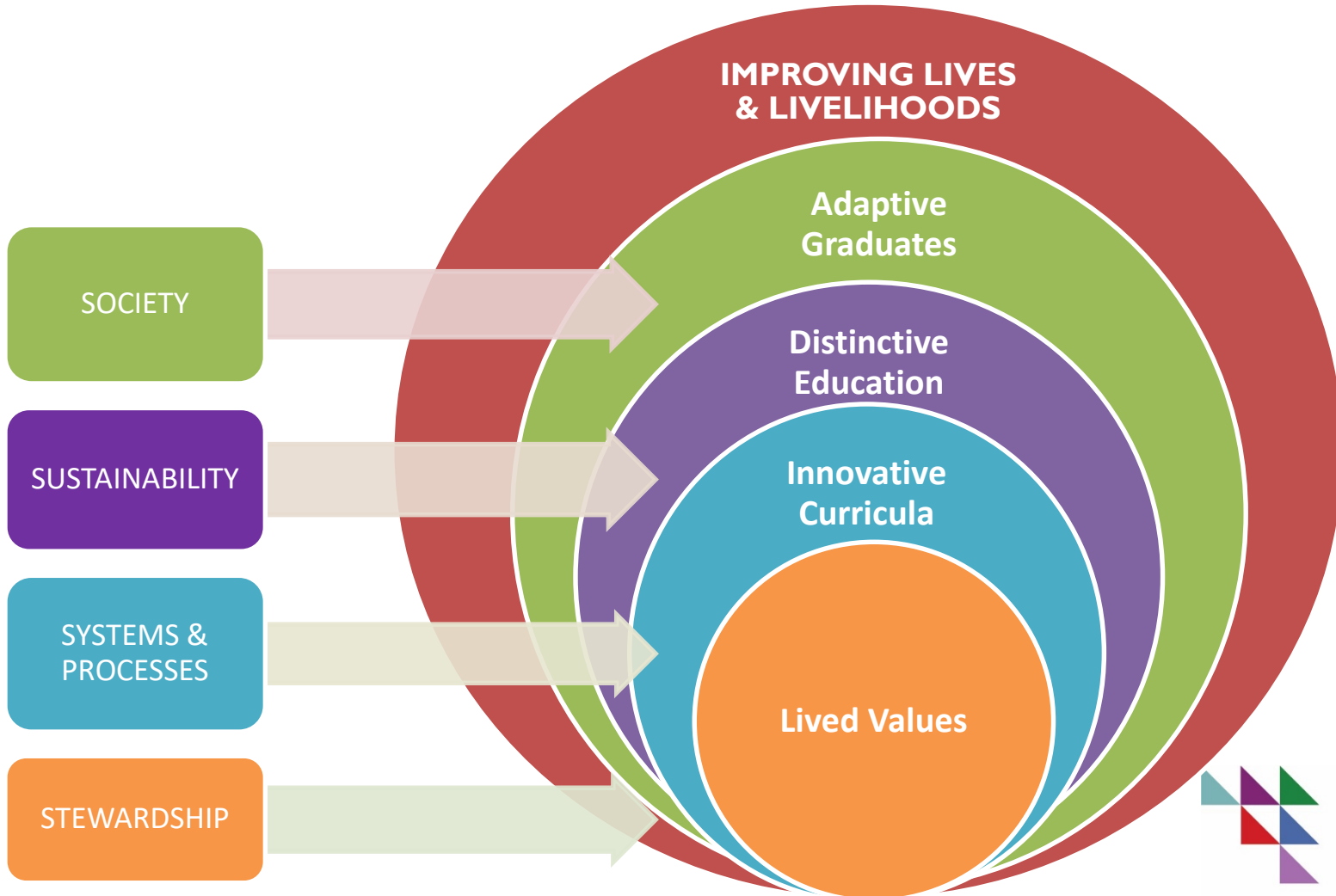
*Prof. Nokuthula Sibiya, DVC Teaching & Learning*

*Siyaphumelela Network 2.0 Conference 2021*



Biggest Student Success Challenges at DUT		Siyaphumelela Focus Areas	
1	Financial and Food Insecurity of our students	1	Sikusekele (Holistic Student Supports redesign)
2	Disjointed University support systems and processes		
3	Different levels of preparedness of students to become adaptive graduates and staff to engage with pedagogies that develop graduates with the acumen to initiate and/or respond to change	2	Moving the Middle: An integrated pedagogical approach to supporting Staff and Students
4	Institutional Culture Change – Creating a data and evidence-led decision-making culture	3	Institutional Culture Change

# ENVISION 2030



DURBAN UNIVERSITY OF TECHNOLOGY  
INYUVESI YASETHEKWINI YEZOBUCHWEPHESHE

ENVISION 2030

fairness • professionalism • commitment • compassion • excellence  
transparency • honesty • integrity • respect • accountability



**Prof. TZ Mthembu,**  
*DUT Vice-Chancellor & Principal*

**Student Health & Wellness Centre,**  
*Student Services*

**Student Support & Development  
(and Students)**  
*Centre for Excellence in Learning  
& Teaching/Student Services*

**Curriculum & Staff Development**  
*Centre for Excellence in Learning  
& Teaching*

**The DUT Values & Principles**

**Nurturing Student Success at DUT  
through ENVISION2030: A  
Student Wellness Approach**

**Students as Collaborators in  
creating meaningful campus  
experience and success:  
Un-silencing the Student Voices**

**Embedding Student Success at DUT  
A Rhizomatic Approach**

**ENVISION2030**

fairness • professionalism • commitment • compassion • excellence  
transparency • honesty • integrity • respect • accountability